



# THE DAUPHINE FOUNDATION

At a glance 2019



# The Dauphine Foundation

Since its creation in 2008, the Dauphine Foundation aims to support the progress of higher education and the growth of Dauphine by funding strategic and innovative projects through individual and corporate donations.

By means of several activities, the Foundation focuses on the three key pillars of Dauphine's development:

## INNOVATION

- Promote entrepreneurship within the Paris Dauphine Incubator
- Drive educational innovation
- Support research

## INTERNATIONAL

- Encourage academic mobility
- Attract talented international students

## SOCIAL RESPONSIBILITY

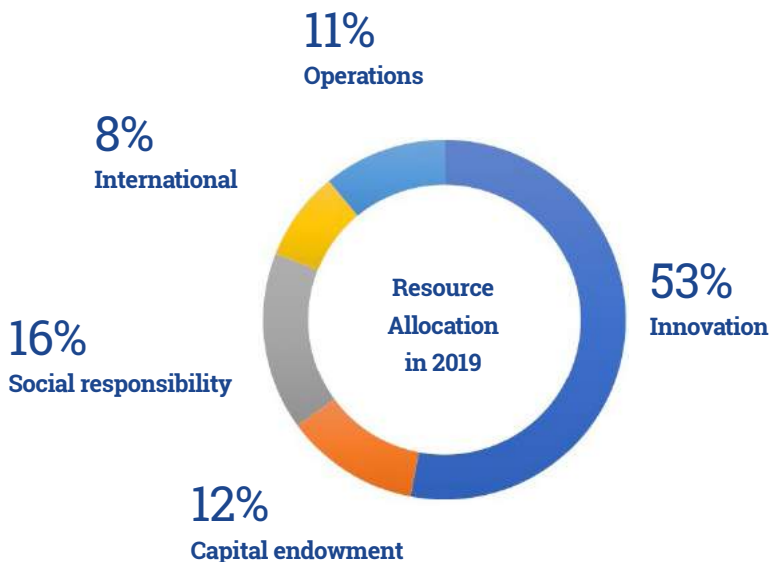
- Improve student housing
- Ensure equal opportunity
- Enhance cultural awareness
- Support sustainable development initiatives



## CAMPUS TRANSFORMATION

Thanks to its donors, the Dauphine Foundation also contributes to the refurbishment of the original university campus, so that it fully embodies Dauphine's ambitions.

- Create spaces dedicated to innovation and collaborative work
- Provide multifunctional welcome facilities and upgrade equipment
- Ensure compliance with the latest standards of environmental sustainability



# €40M

raised since 2008 amongst individual and corporate donors to promote excellence and solidarity at Dauphine

## HOW TO GIVE

**Giving to the Dauphine Foundation contributes to shaping the future, while developing and promoting an innovative university model based on excellence and solidarity.**

Supporting the Foundation also means benefiting from a recognition program according to your contribution, becoming a member of a community of committed people, attending special events on the campus and sharing ideas:

- Major Donors Circle
- Benefactors Club
- 1,000 Club
- Young Donors Club

[www.fondation-dauphine.fr/reconnaissance](http://www.fondation-dauphine.fr/reconnaissance)

To make a donation by credit card, bank transfer or check:

[www.fondation-dauphine.fr/don](http://www.fondation-dauphine.fr/don)

In addition, the Dauphine Foundation is authorized to receive bequests, temporary donations of usufruct or life insurance contracts. Learn more:

[www.fondation-dauphine.fr/comment-donner](http://www.fondation-dauphine.fr/comment-donner)

## 66%

**You can deduct 66% of the amount of the donation from the income tax, up to a limit of 20% of net taxable income.**

## 75%

**You can deduct 75% of the amount of the donation from your property wealth tax, if you are subject to it, of €50,000.**

## 60%

**You can deduct 60% of the amount of the donation from the company tax, up to a limit of 0.5% of turnover.**

The Dauphine Foundation is certified «Don en confiance» since 2016, since it meets four core requirements of philanthropy: transparency, respect for donors, rigorous and disinterested management.



## DAUPHINE TODAY

# 43%

**of private funding and a €118M budget**

**9,180 full-time undergraduate students**

**1,300 students in apprenticeship**

**4,800 executives trained through Executive Education**

**90,000 alumni around the world**

**305 PhD students**

**590 researchers and Research-professors**

**Founding Member of Université Paris Sciences et Lettres (PSL)**

# Financial Statement

## Supply and use account 2019

USE		SUPPLY	
<b>Social activities</b>	<b>392,303</b>	<b>Income related to public generosity</b>	<b>1,810 741</b>
<b>Activities carried out in France by the Dauphine Foundation</b>	<b>274,759</b>	Contributions without consideration	
Activities carried out by Dauphine University or other organizations operating under its authority	36,906	Donations, Bequests and Sponsorship	1,810 741
“Social responsibility” activities	237,853	- Individual donations	1,810 741
<b>Activities carried out abroad</b>	<b>117,544</b>	Other income related to public generosity	
<b>Fundraising expenses</b>	<b>262,459</b>		
Fundraising campaign expenses	262,459		
Other fundraising			
<b>Operating expenses</b>	<b>220,778</b>		
<b>TOTAL USE</b>	<b>875,540</b>	<b>TOTAL SUPPLY</b>	<b>1,810 741</b>
<b>Reserve for depreciations</b>	<b>79,962</b>	<b>Reversal of provisions for depreciations</b>	
<b>Carryover of dedicated funds in 2019</b>	<b>722,252</b>	<b>Use of previous dedicated funds</b>	
<b>Fundraising surplus in 2019</b>	<b>132,987</b>	<b>Fundraising deficit in 2019</b>	
<b>TOTAL</b>	<b>1,810 741</b>	<b>TOTAL</b>	<b>1,810 741</b>

## Balance sheet summary

ASSETS	2019	2018
Fixed assets	4.381,199	4.32,265
Marketable securities	10.56,208	8.657,289
Other operating receivables	551,219	501,327
<b>TOTAL ASSETS</b>	<b>15.288,626</b>	<b>13.485,881</b>

LIABILITIES	2019	2018
Equity and reserves	8.556,585	7.898,594
Dedicated funds	3.713,207	2.499,261
Provisions	60,000	60,000
Debt	2.958,834	3.028,026
<b>TOTAL LIABILITIES</b>	<b>15.288,626</b>	<b>13.485,881</b>

## Extract of Statutory Auditor's statement

*In our capacity as statutory auditors for your Foundation, we certify that the financial statements provide a reliable and accurate report of the operating results and of the financial assets and liabilities of the Dauphine Foundation, as of December 31, 2019, in accordance with the professional standards of the French auditing body.*

**Paris, April 2, 2020**  
**Baker Tilly STREGO**  
**Chartered Accountants and Auditors**



## Financial Statement of sources and uses of funds 2019

INCOME BY SOURCE			
	TOTAL	Including public generosity	Allocation
<b>Income related to public generosity</b>	<b>1.810,741</b>	<b>1.810,741</b>	
Contributions without consideration			
Donations, bequests and sponsorship	<b>1.810,741</b>	<b>1.810,741</b>	100%
- Individual donations	<i>1.810,741</i>	<i>1.810,741</i>	
- Bequests, donations and life insurance contracts			
- Corporate sponsorship			
Other income related to public generosity			
<b>Other income</b>	<b>3.204,004</b>		
Contributions with consideration			
Corporate sponsorship	<b>2.585,600</b>		
Financial contributions without consideration			
Other income not related to public generosity	<b>618,404</b>		
- Student housing income	<i>237,254</i>		
- Incubator income			
- Financial income	<i>75,908</i>		
- extraordinary profit or loss	<i>142,304</i>		
	<i>162,938</i>		
<b>Subsidies and other public grants</b>	<b>21,600</b>		
<b>Reversal of provisions for depreciations</b>			
<b>Use of previous dedicated funds</b>	<b>253,022</b>		
<b>TOTAL</b>	<b>5.289,367</b>	<b>1.810,741</b>	<b>100%</b>

## Financial Statement of sources and uses of funds 2019

INCOME BY USE			
	TOTAL	Including public generosity	Allocation
<b>Social activities</b>	<b>2.645,603</b>	<b>392,303</b>	
<b>Carried out in France:</b>	<b>2.358,912</b>	<b>274,759</b>	
• Activities carried out by the Dauphine Foundation			
• Activities carried out by Dauphine University or other organizations operating under its authority	2.358,912	274,759	
- "Creativity and innovation"	1.778,783	36,906	41% (without chairs)
- "Social responsibility"	580,129	237,853	41%
<b>Carried out abroad</b>	<b>286,692</b>	<b>117,544</b>	41%
<b>Fundraising expenses</b>	<b>262,459</b>	<b>262,459</b>	<b>100%</b>
Fundraising campaign expenses	262 459	262 459	100%
Other fundraising expenses			
<b>Operation expenses</b>	<b>401,415</b>	<b>220,778</b>	<b>55%</b>
<b>Reserve for depreciations</b>	<b>195,029</b>	<b>79,962</b>	<b>41%</b>
<b>Income taxes</b>	<b>14,768</b>		
<b>Carryover of dedicated funds in 2019</b>	<b>1.317,001</b>	<b>722,252</b>	<b>Sheltered Foundation</b>
<b>TOTAL</b>	<b>4.836,276</b>	<b>1.677,755</b>	
<b>SURPLUS OR DEFICIT</b>	<b>453,091</b>	<b>132,987</b>	

**CONTACT**

contact@fondation-dauphine.fr  
01 44 05 43 45



**DAUPHINE FOUNDATION**  
Place du Maréchal de Lattre de Tassigny  
75775 Paris cedex 16  
fondation-dauphine.fr